



## **Dry floor screed panels**

---

Environmentally friendly

---

Impressive acoustic performance

---

Easy to install

---

High recycled content

---

## **Knauf Brio Flooring Systems**

**Improved acoustic performance and underfloor heating efficiency**



## Brio is a dry floor screed with exceptional performance benefits

Knauf Brio is an engineered gypsum flooring panel with 60% recycled content, specially developed for use in new or refurbished residential and commercial buildings. It's a strong, lightweight and quickly-installed dry screed system.

Knauf Brio does not require additional specialist trades on site; installation is well within the capabilities of a competent tradesperson. Brio is manufactured with precision, so that boards fit together smoothly and quickly.

Once installed, Knauf Brio creates a robust monolithic floor with a high density of 1100Kg/m<sup>3</sup>, and so reduces impact and airborne sound transmission.

Knauf Brio also has a very high thermal conductivity so underfloor heating response times are quicker and energy use is reduced. With a wholly dry installation process, Brio maximises on-site efficiency too.

### KEY FACTS

Gypsum fibre dry floor screed panel

Excellent thermal conductivity

Dimensionally stable

Ideal over underfloor heating

High density provides excellent acoustic performance

Strong and exceptionally well engineered

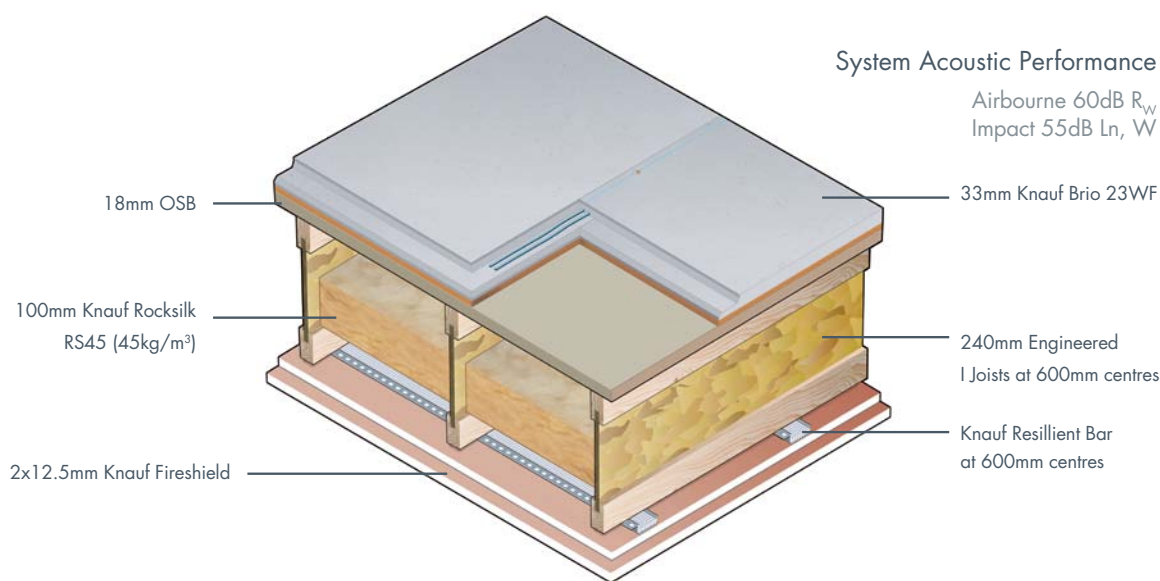
High recycled content

# Brio reduces noise underfoot

Knauf Brio is a high-density gypsum fibreboard that helps reduce airborne noise to meet acoustic requirements whilst minimising floor build-up heights. Simple constructions, using no additional specialist trades, can easily meet Approved Document E of the Building Regulations. In fact Knauf Brio has helped the achievement of BREEAM Outstanding ratings thanks to acoustic results well in excess of Approved Document E and reduced water use on site.

The panels are also available as Knauf Brio WF with an additional laminated wood-fibre layer. In refurbishment projects, over uneven timber plank or old screed floors, Knauf Brio WF gives impact noise reduction as well as limiting airborne noise, whilst minimising additional build up height, as demonstrated in the system below.

## Combine excellent acoustics with a solid high quality floor surface



## Knauf Brio Components

### Knauf Brio Dry Screed Panels

	Thickness	Width	Length	Article No
Brio 18	18mm	600mm	1200mm	000 82 667
Brio 23	23mm	600mm	1200mm	000 82 670

### Knauf WF Brio Dry Screed Panels

	Thickness	Width	Length	Article No
Brio 18WF	28mm	600mm	1200mm	000 82 669
Brio 23WF	33mm	600mm	1200mm	000 82 671

### Knauf Brio Screws

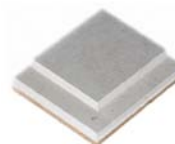
	Length	Diameter	Article No
Brio 18 Screws	17mm	4.2mm	000 67 067
Brio 23 Screws	22mm	4.2mm	000 67 068

### Knauf Brio Joint Adhesive

	Kg	Article No
Joint Adhesive	0.8	000 88 533

### Knauf Flooring Edge Strip

	Length	Height	Width	Article No
Flooring Edge Strip	1200mm	100mm	10mm	001 08 502





**Customer Service**

UK Freephone: 0800 521 050  
UK Freefax: 0800 521 205  
Eire Tel: 01 4620739  
Eire Fax: 01 4620745  
Email: [cservice@knauf.co.uk](mailto:cservice@knauf.co.uk)

**Technical Service**

UK Tel: 01795 416 259  
Eire Tel: 01 4620739  
Email: [technical@knauf.co.uk](mailto:technical@knauf.co.uk)

**Literature**

UK Tel: 08700 613 700  
Eire Tel: +44 8700 613 700

**Website**

[www.knauf.co.uk](http://www.knauf.co.uk)  
[www.knauf.ie](http://www.knauf.ie)

Knauf  
Kemsley Fields Business Park  
Sittingbourne  
Kent ME9 8SR

Knauf  
87 Broomhill Road  
Tallaght  
Dublin 24

**Knauf Factory Locations**

Ridham Dock  
Sittingbourne  
Kent

Queens Road  
Immingham  
N.E. Lincolnshire

