



CladEX

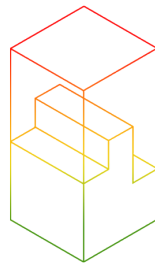
**It's what's on
the outside that
counts, too.**



Partnership . Trust . Innovation

**External cladding
designed to
improve the
thermal efficiency
and overall
aesthetics of
modular buildings.**



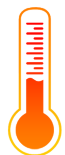


CladEX

CladEx is available in a diverse range of finishes including contemporary metallics, warm wood grains, eco-friendly earth tones and traditional leather grains. The hidden-fix joints combined with the contemporary finishes create an external finish that was previously unachievable for modular buildings.



Cost effective



Thermally efficient



Steel guarantee



Abrasion resistant



Factory fit capability



New builds & refurbishments



Manufactured in the UK

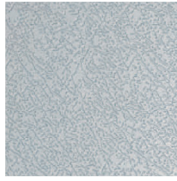


60-minute fire rating as part of a certified system

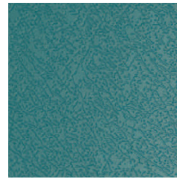
Finishes



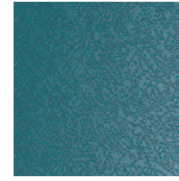
White



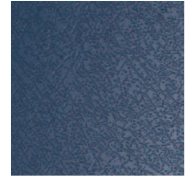
Albatross



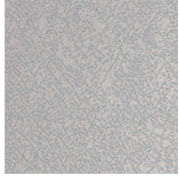
Wedgewood Blue



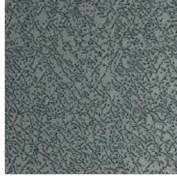
Ocean Blue



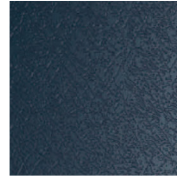
Sargasso



Goosewing Grey



Merlin Grey



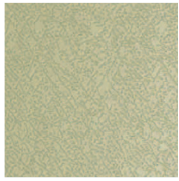
Raven



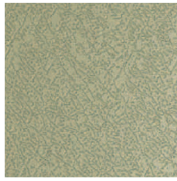
Anthracite



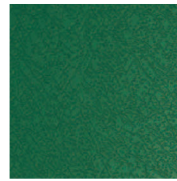
Black



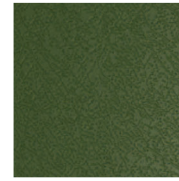
Meadowland



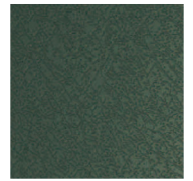
Moorland Green



Heritage Green



Olive Green



Juniper Green



Hamlet



Honesty



Mushroom



Terracotta



Vandyke Brown

Leather Grain

The staple finish for the modular industry.

The Leather Grain finish is available in a variety of colours at a competitive price. With performance guaranteed for up to 25 years, the quality Leather Grain steel is ideal for bonding to the ecofoam core of CladEx to provide a neat finish that requires no unsightly T-section trims.

Innovation

Contemporary & traditional combined.

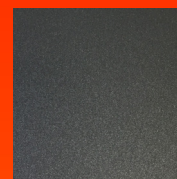
The Innovation range is a mix of traditional Wood Grain & modern Metallics. Traditional wood cladding emits a warm and welcoming aesthetic but, for maintenance, longevity and fire safety, steel is the superior choice.



Golden Oak



Silver Metallic



Grey Rock

Earth



Graphite Grey



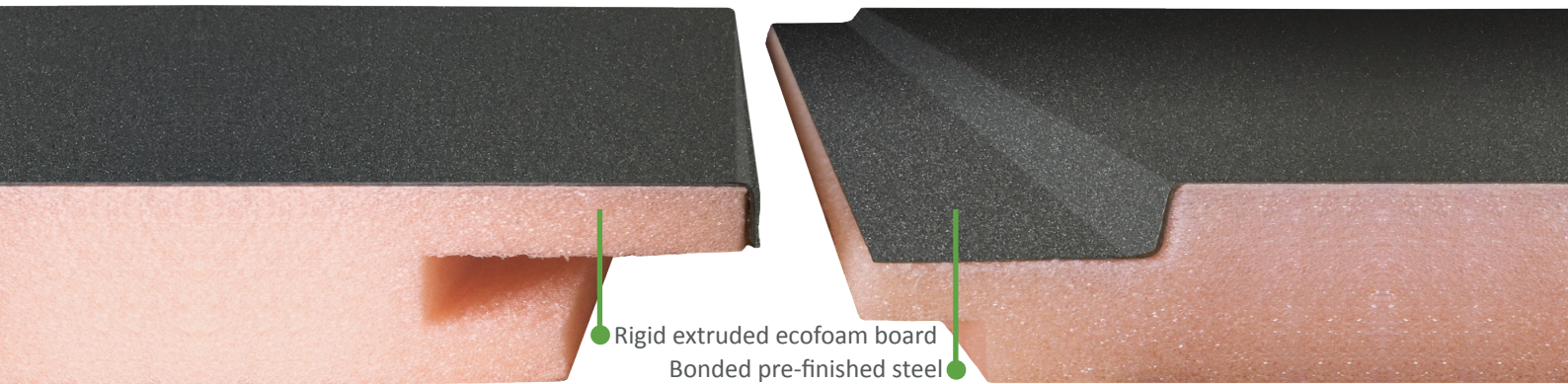
Copper Brown



Chrome Green

The organic steel inspired by nature.

The Earth collection is inspired by nature both aesthetically and ecologically. The finishes blend seamlessly with nature, come with a guarantee of up to 35 years, and are also free from chromates and heavy metals - ideal for environmentally-responsible construction.



Rigid extruded ecofoam board
Bonded pre-finished steel

Prisma

Unique finishes that are made to last.

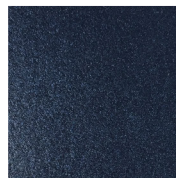
Guaranteed for up to 40 years, the Prisma range includes natural metallics and glitter emboss finishes to bring modular facades bang up to date. The Prisma range is also ecologically sound; all colour options are free of VOCs, fully REACH compliant and free of chromates. The rich colours combined with an outstanding technical performance make Prisma the contemporary classic collection.



Pegasus



Aquarius



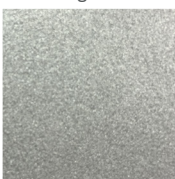
Atlantis



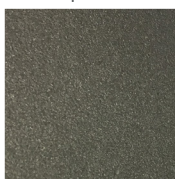
Helios



Kronos



Sirius



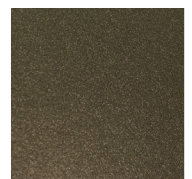
Orion



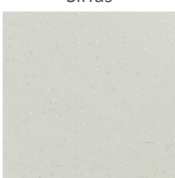
Zeus



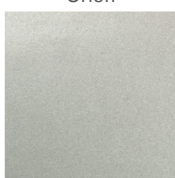
Ephyra



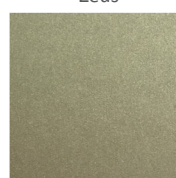
Ariana



Seren White



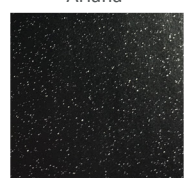
Seren Silver



Seren Gold



Seren Copper



Seren Black

What Our Clients Say

Don't just take our word for it. We have numerous clients from the offsite construction industry who use CladEx on a regular basis. See some of the recent projects below and find out what they have to say about the product:



This product is perfect for recladding or using on new builds in the modular industry – eliminating most of the cold-bridging through continuity of insulation. It is easy to fit and has a long-lasting, durable finish.

Mike Britner
Operations Manager
Cotaplan Modular Building Systems



We found this product to be extremely good for this particular project offering a high quality finish. We achieved our desired effect with no problems at all and to the satisfaction of our client. We wouldn't hesitate to use CladEx again and would recommend it to members of our supply chain.

Steven Hartley
Managing Director
MTX Contracts Ltd



CladEx appealed to us as the panels had the versatility to be laid horizontally and the hidden-fix joints created a polished, modern finish that hadn't previously been economically viable. Our team found the fixing process quick and straight-forward and we will definitely look at using CladEx again on future projects."

Paul Tierney
Managing Director
Extraspace Solutions

FAQs

What sizes can you manufacture?

We can manufacture any size up to 4000mm x 1180mm.

What are the finished dimensions?

Full panels finish shoulder-to-shoulder at 1180mm wide with a half panel starting at 570mm. We can finish the panel at any size 1180mm and under.

How are the panels fixed and what trims do you supply?

Please see the recommended fixing process below and refer to the Technical Specification sheet for all fixing details.

What U-Values will CladEx achieve?

The U-value can be as low as 0.21W/m²K when used as part of Excel's specified wall system - see Technical Specification.

What thicknesses does it come in?

30mm as standard, but can be made up to 50mm thick.

What is the minimum order?

It is generally 10 sheets minimum order quantity, but please check with us to confirm as this depends on the finish and colour.

Does Cladex need a balancing sheet?

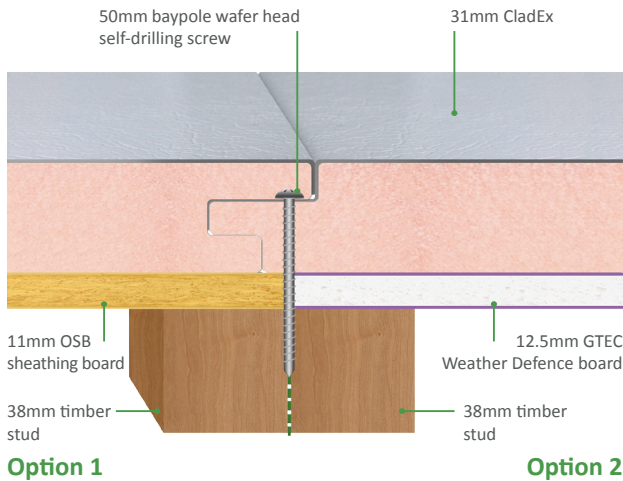
Not essential but, for ease of installation, we suggest any panel over 2400mm be bonded with a balancing sheet.

What is the lead time for CladEx?

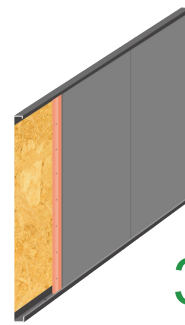
It is generally 10 - 14 clear working days from payment/order, but please check with us to confirm.

Fixing Process

CladEx can be used on new builds or as overcladding for refurbishments. Panels can be laid vertically or horizontally, depending on personal preference.

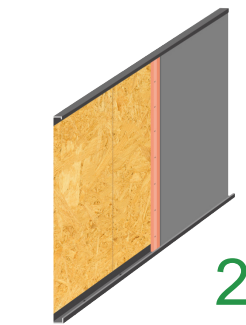


The recommended CladEx fixing processes using either timber or steel studs.



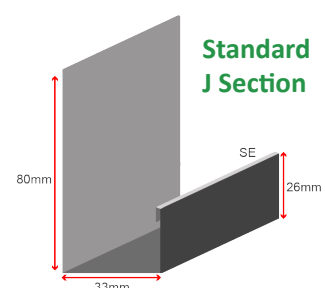
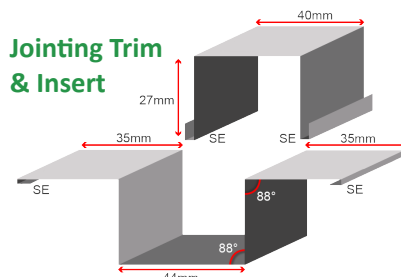
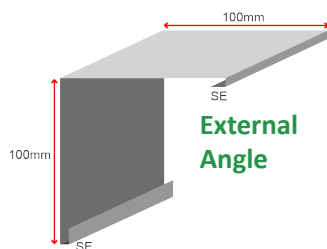
Fixed angle trim top and bottom. Drainage holes at 600mm centres advised.

Interlock next panel and repeat process. No need for T-section cover trims.

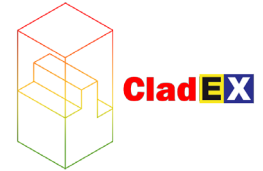


Secret fix to studs at 300mm centres down tongue edge using 50mm screws. Add silicon bead line down full length of tongue.

Associated Trims



Technical Specification



System Type:	External Insulated Cladding for the Offsite Construction Industry.
Manufacturer:	Excel Laminating Ltd
Nominal thickness:	31mm
Maximum height:	4000mm

Properties

Fire resistance (minutes): 60 minutes - with OSB or Weather Defence sheathing and 15mm Mega Excel boarding inside. The assembled system has been tested at Exova for fire resistance in accordance with BS EN 1364 – 1 : 2015 . It achieved a fire rating of 60 minutes in both cases of fire exposed from outside to inside (using Weather Defence sheathing) and also inside to outside (using OSB sheathing) in two separate tests.

Fire test code references

External fire exposure: BMT/FEP/F/15246 10/11/2015
Internal fire exposure: BMT/FEP/F/15247 13/11/2015

Sound reduction Rw:

The CladEx panel is Rw 15 dB. The assembled system with timber studs is Rw 43 dB and Rw 45 dB with steel studs. Can be improved up to Rw 53 dB if 15mm MegaExcel is fixed onto the studs with horizontal resilient bars at 600mm centres.

BS 5234 duty grade:

Severe

Thermal insulation:

R value is 0.90 m²K/W. Typical system

U value is 0.28 W/m²K using 100mm mineral wool insulation and 0.21 W/m²K using 140mm mineral wool insulation.

Framing installation

Studs, top and bottom rails: Single frame of CLS Timber studs can be 120x38mm or 140x38mm at 400 or 600 mm centres as appropriate factory manufactured frames by others.

Panel specification: 30mm Eco Polyfoam XPS + 0.50mm or 0.70mm Pre-coated Steel

Bracing type and fixings: Mid height noggins are recommended. The product is secretly fixed to the studs with 50mm self drilling wafer head screws, at 300mm centres down the tongued vertical edge. A silicon bead line is then also added down the full length of tongued vertical edge. It is fixed to the centre studs using 6 mm zig zag beads of Solvent free grip adhesive when fixing Polyfoam directly to another substrate (limitations apply). There is a fixed J Section top and bottom. It is advised to drill drainage into the bottom trim at 600mm centres. Panels can be laid vertically or horizontally.

Distance between frames:

No maximum limit

Plasterboard linings

Internal lining:

Sheathing:

One layer of 15mm GTEC MegaExcel wallboard.

One layer of 11mm OSB 3 or 12.5mm GTEC Weather Defence board.

Plasterboard fixings:

Internal:

Cavity insulation: 50mm GTEC Drywall Hi thread screws all at 300mm centres.

Density: Glass mineral wool type insulation.

Thickness: 10 kg/m³ minimum.

Insulation fixing: 120mm or 140mm depending on the stud size and required U value.

Acoustic/fire protection: By way of friction inside the stud cavities.

Apply 6mm continuous beads of Intumescent Sealant around the perimeter in order to make the panel air tight.

Finishes

Type of finish - internal:

GTEC Taping and jointing system or Excel PVC Pre-decorated MegaExcel boards with a 2 Part PVC H-Section.



About Excel

Established in 1997, Excel is an independent, family-run business. We take great pride in providing an unrivalled level of commitment to our customers. We continuously invest in our people, our plant and our products to ensure customers receive the highest quality of service.

Our knowledge of the off-site building sector and our experience in supplying this industry has made us experts in engineering time-saving, high-performance solutions.

Jeff Thomas
Managing Director

Excel Laminating Limited

www.excel-laminating.co.uk

Unit 3 Kingston International Business Park, Hedon Road, Hull HU9 5NX

T. (01482) 326866 E. sales@excel-laminating.co.uk



Partnership . Trust . Innovation